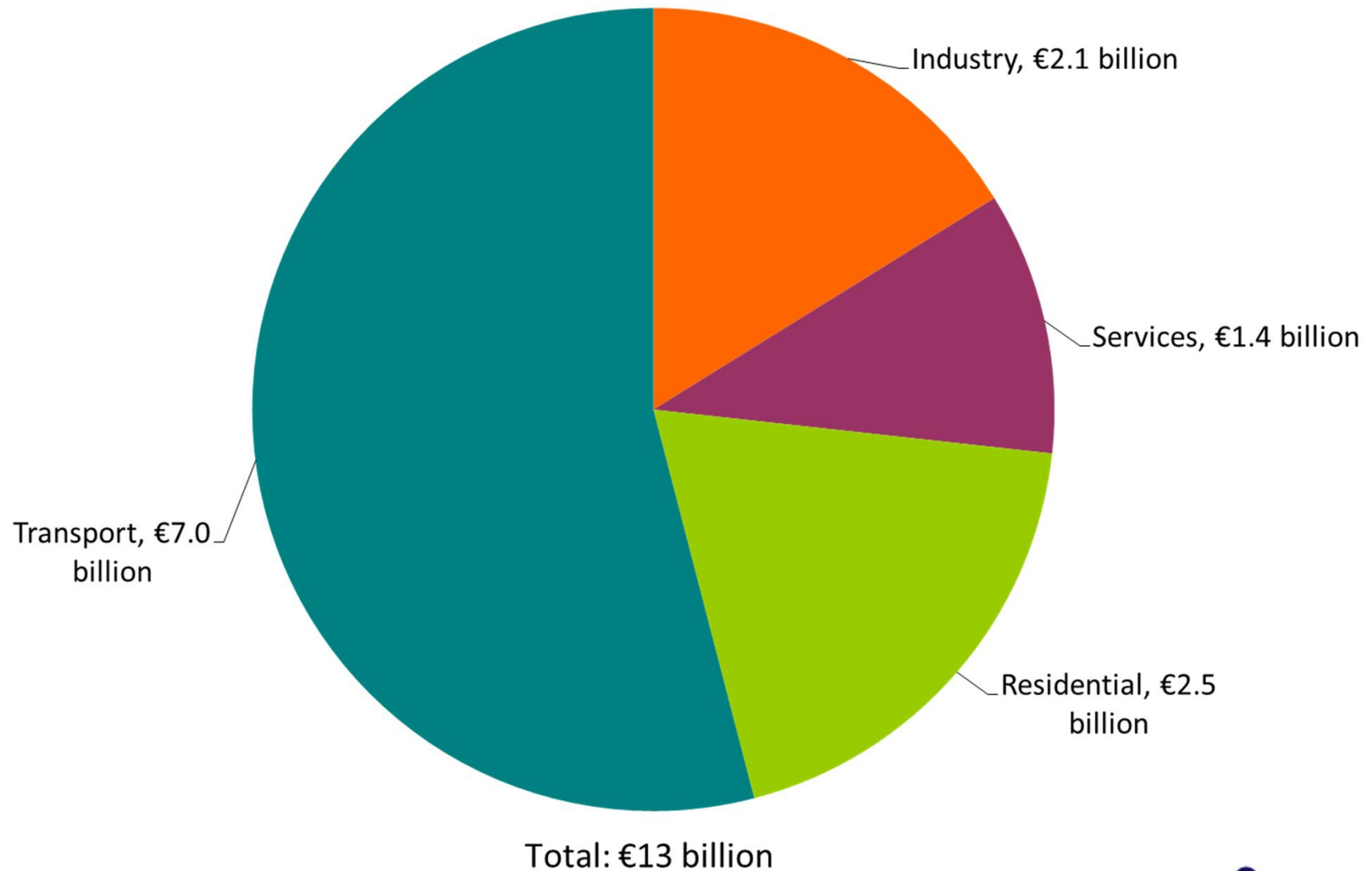


Electricity & Gas Prices in Ireland

2nd Semester 2014

- Global oil and gas price
- Electricity price to business
 - Trends, ranking & disaggregation
- Gas price to business
 - Trends & ranking
- IEA price data comparison with United States

Consumer spend on energy in 2013

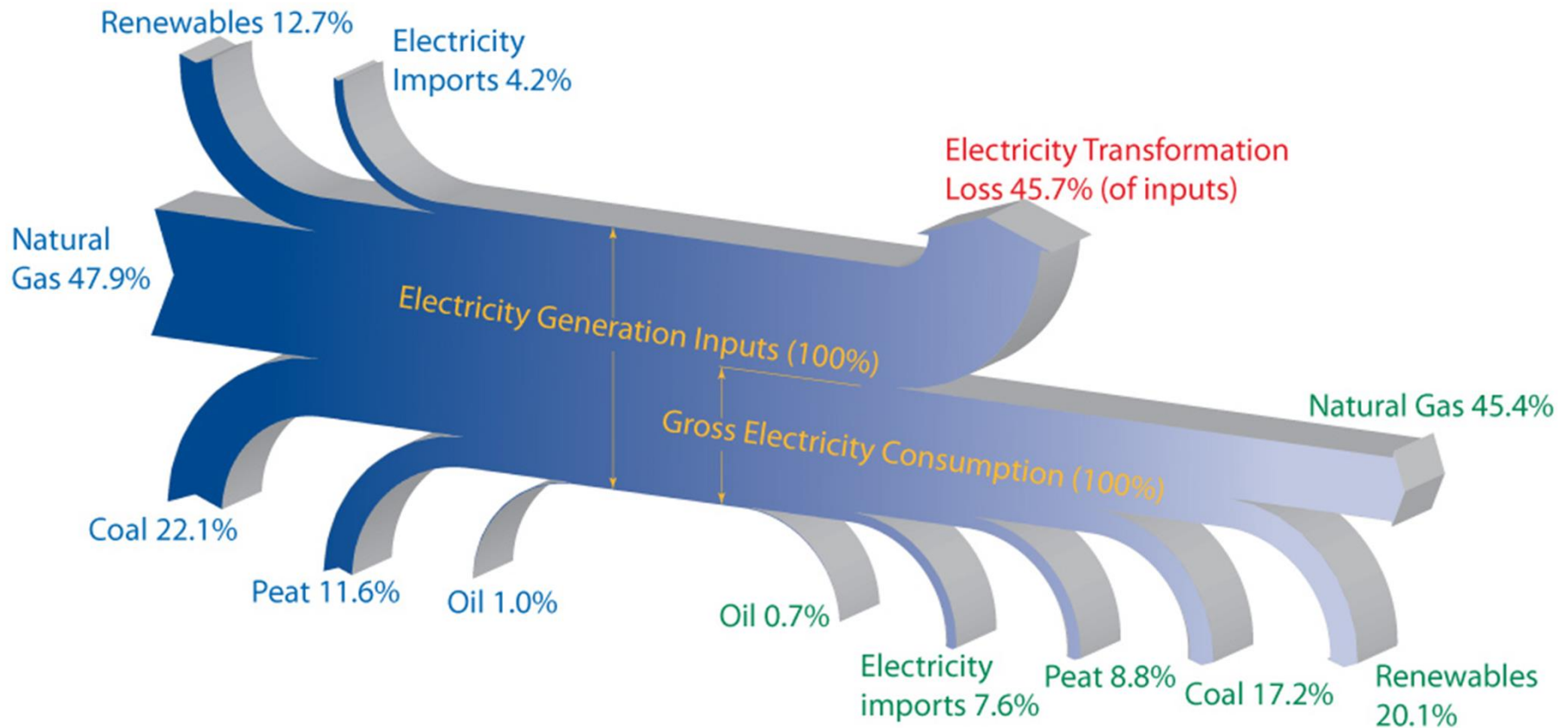


Global Oil Prices

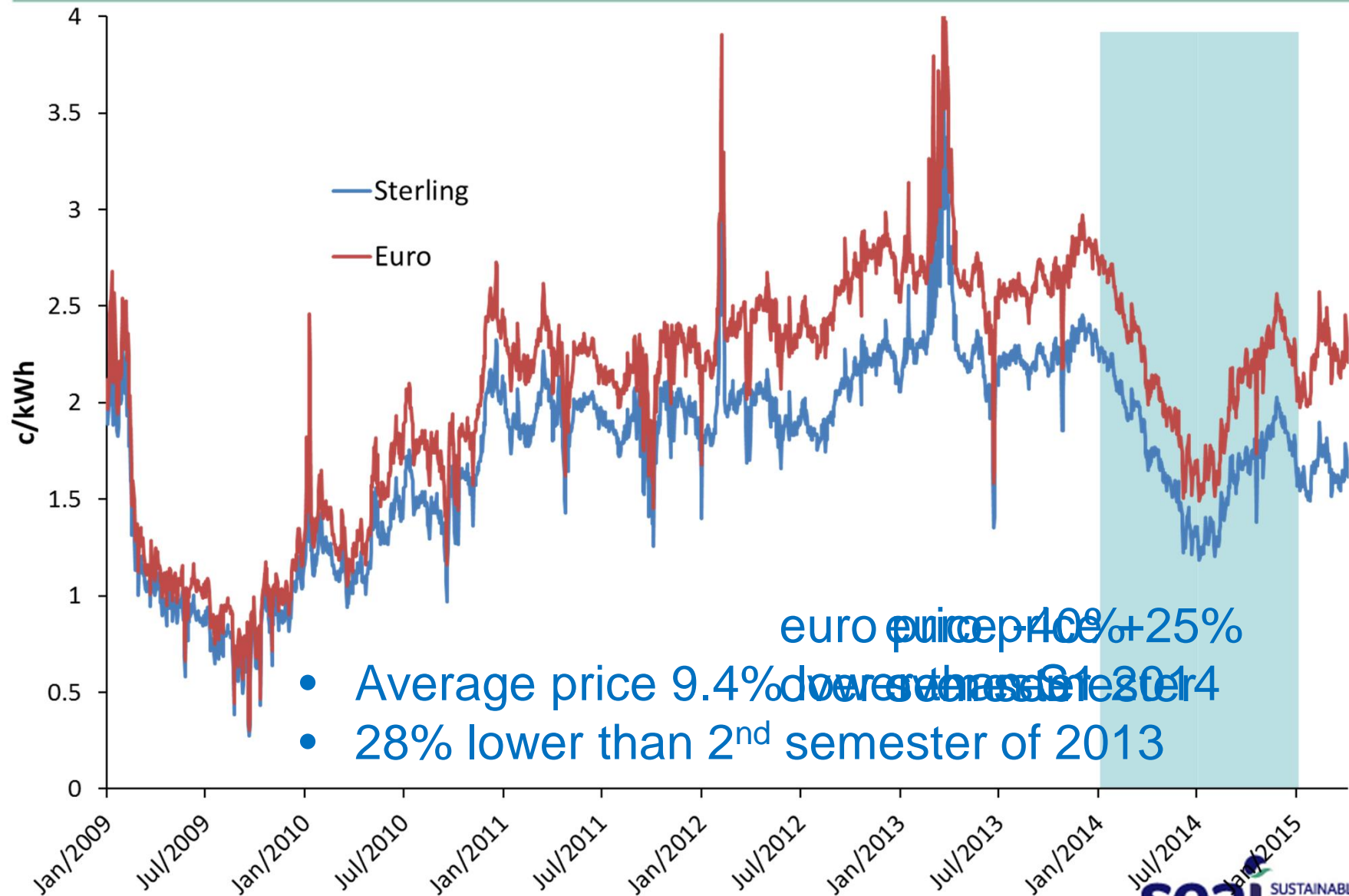


— Europe Brent Spot Price FOB (\$/Barrel)

Gross Electricity Generation 2013



UK National Balancing Point Gas Price (actual day p&c/kWh)



Business Electricity Consumption Bands

| | Annual Electricity Consumption (MWh) | | | |
|------------------|--------------------------------------|------------|-----------------|-------------------------------|
| Consumption band | Lowest | Highest | Share of Market | Annual Spend - up to (ex-vat) |
| Band IA | - | < 20 | 8.3% | €4k |
| Band IB | 20 | < 500 | 31.0% | €80k |
| Band IC | 500 | < 2,000 | 17.9% | €270k |
| Band ID | 2,000 | <20,000 | 27.6% | €2,320k |
| Band IE | 20,000 | < 70,000 | 10.1% | €7,100k |
| Band IF | 70,000 | <= 150,000 | 5.1% | €13,800k |

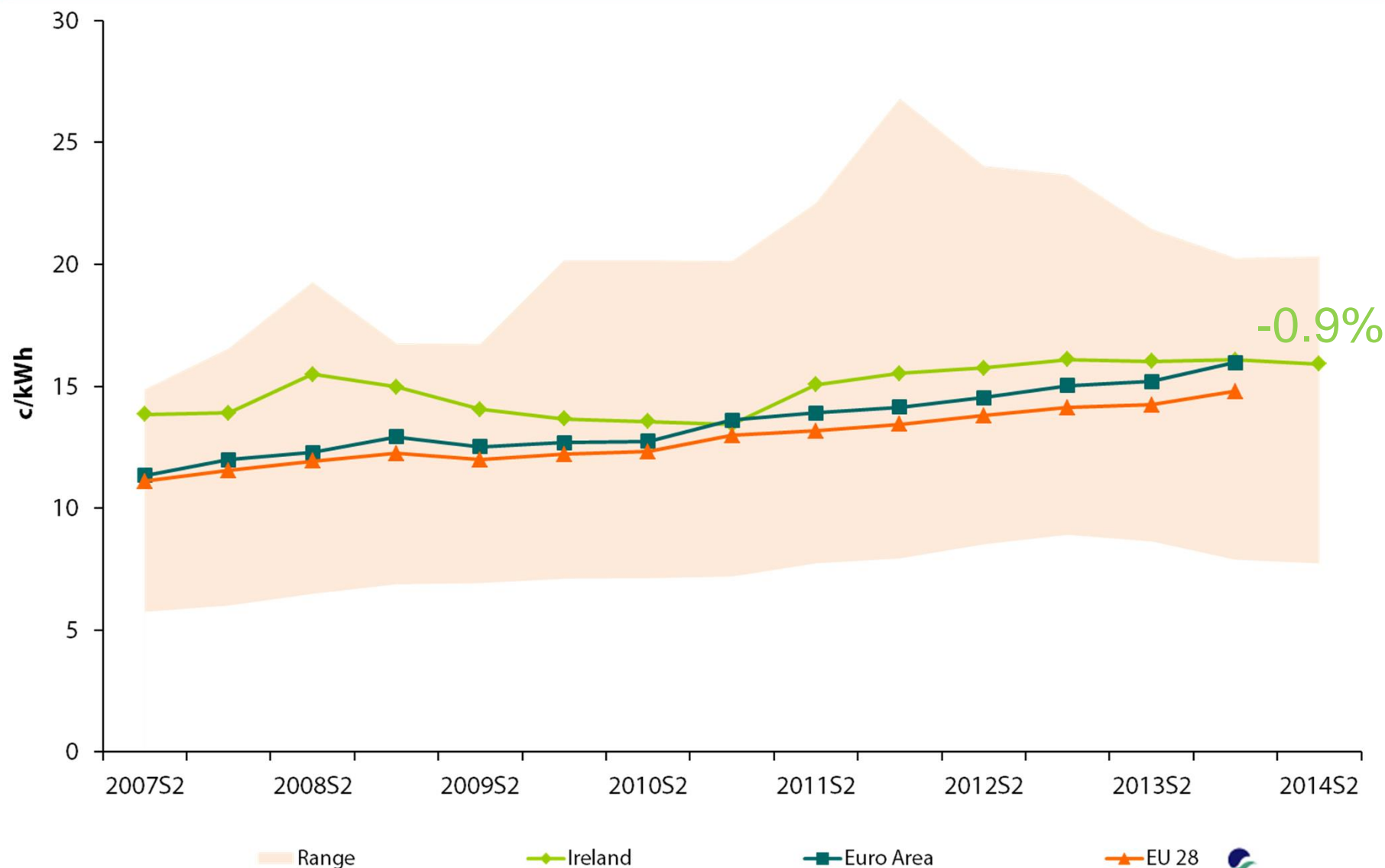
Electricity Price (ex-VAT) to Business 1st Semester 2014

| Band | Share | Price c/kWh | Price relative to | | Ranking | | Semester price change | | |
|------|-------|----------------|-------------------|------|---------|----|-----------------------|-------|-------|
| | | | EU | EA | EU | EA | Ireland | EU | EA |
| IA | 9.5% | 18.4 | 96% | 89% | 10 | 9 | -4.0% | -1.3% | -1.5% |
| IB | 32.2% | 15.8 | 106% | 99% | 7 | 7 | -1.7% | 3.9% | 5.1% |
| IC | 16.8% | 13.4 | 108% | 101% | 5 | 5 | -2.6% | 4.1% | 5.3% |
| ID | 26.0% | 11.6 | 107% | 100% | 7 | 5 | -0.7% | 1.9% | 2.5% |
| IE | 9.2% | 10.1 | 107% | 103% | 8 | 5 | -1.6% | 0.0% | -0.4% |
| IF | 6.3% | 9.2 | 108% | 106% | 7 | 5 | -1.1% | 1.3% | 1.6% |

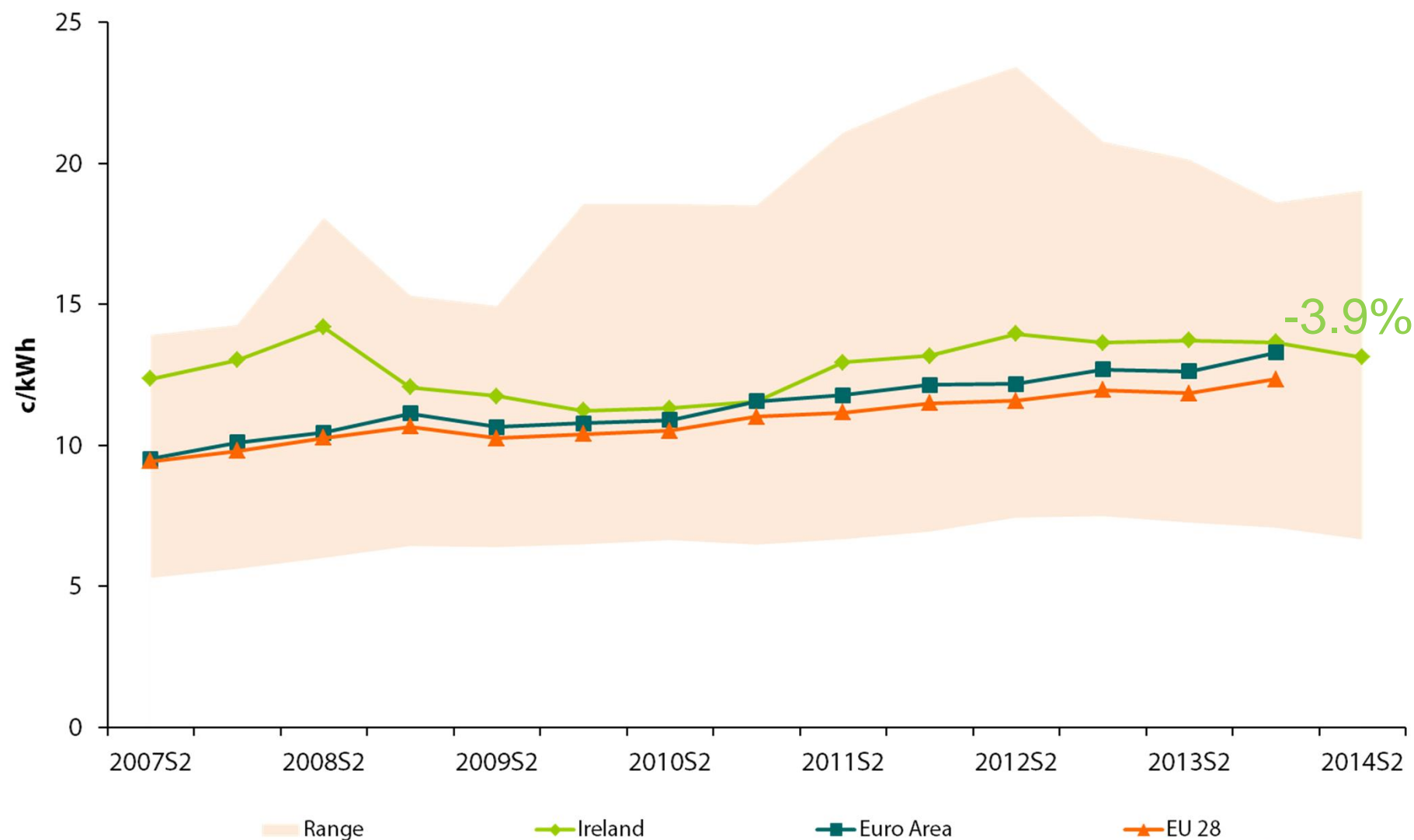
Electricity Price (ex-VAT) to Business 2nd Semester 2014

| Band | Market share | Price c/kWh | Price change | |
|------|--------------|----------------|--------------|-----------|
| | | | Semester | 12 Months |
| IA | 8.3% | 19.7 | 2.6% | 3.1% |
| IB | 31.0% | 15.9 | -0.9% | -0.7% |
| IC | 17.9% | 13.1 | -3.9% | -4.4% |
| ID | 27.6% | 11.0 | -4.8% | -5.3% |
| IE | 10.1% | 9.3 | -9.1% | -10.1% |
| IF | 5.1% | 8.8 | -3.8% | -4.8% |

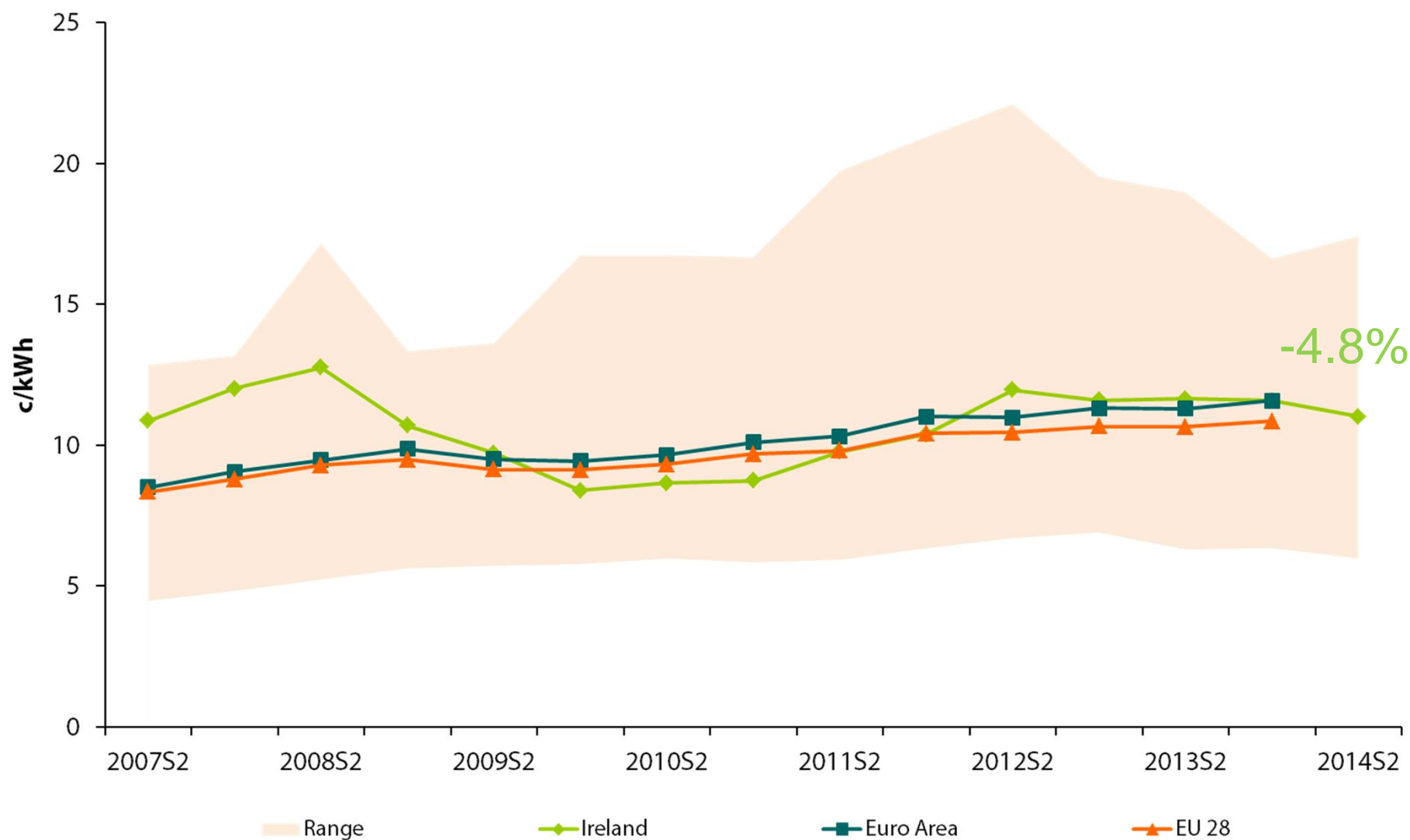
Business Electricity Prices (band IB ex-VAT)



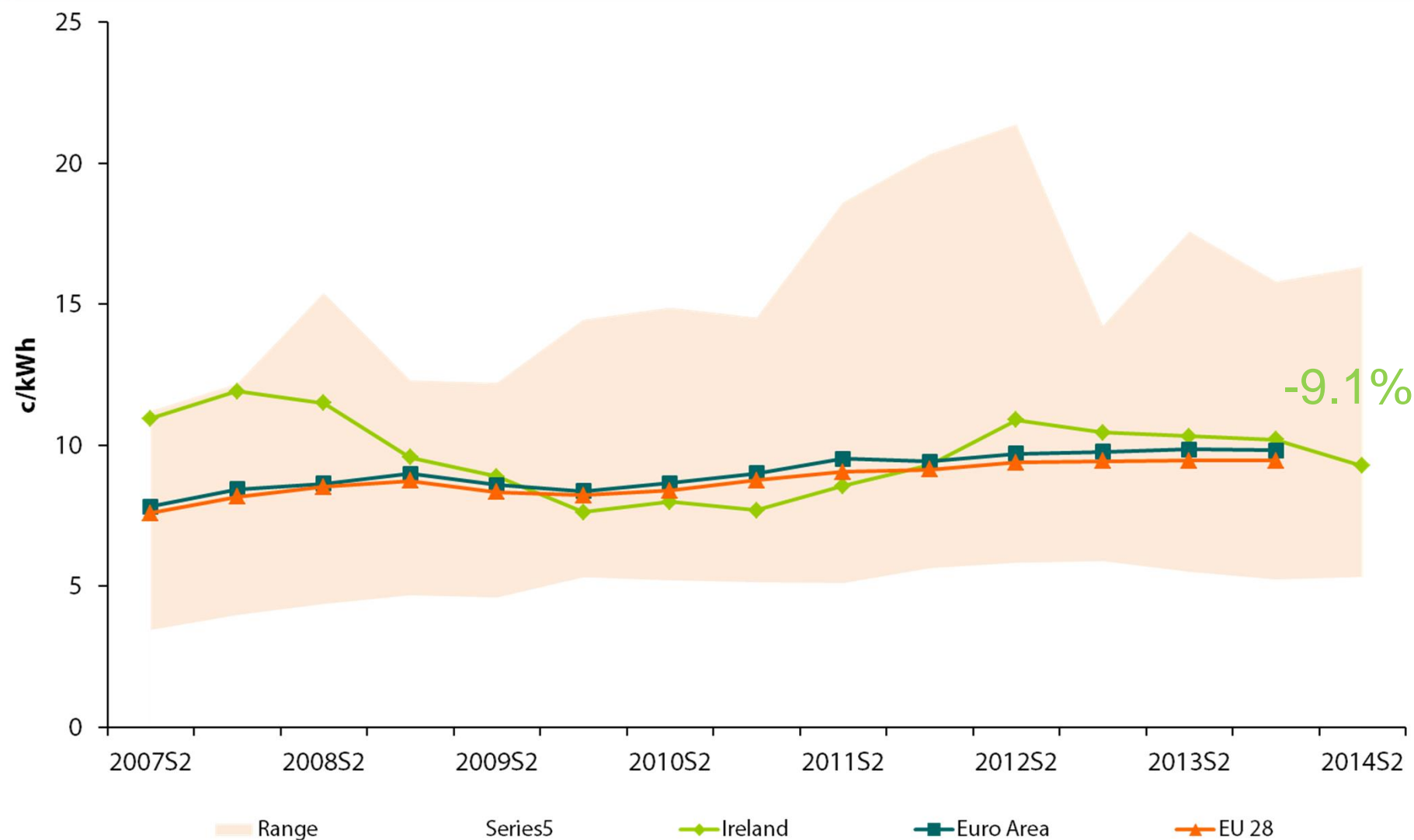
Business Electricity Prices (band IC ex-VAT)



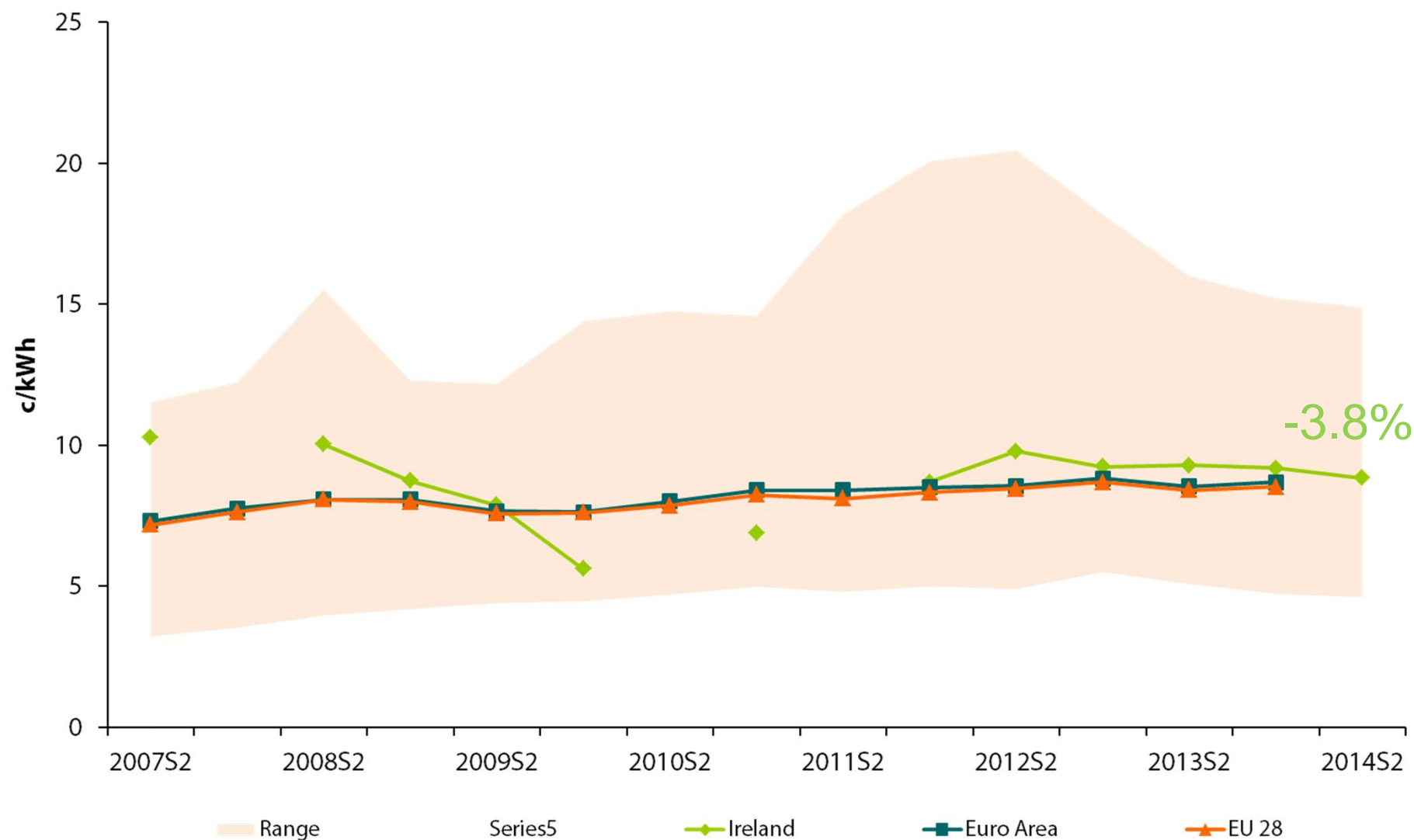
Business Electricity Prices (band ID ex-VAT)



Business Electricity Prices (band IE ex-VAT)



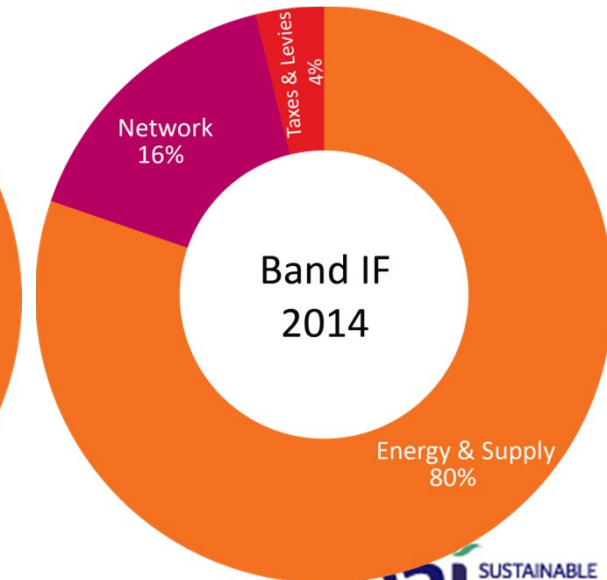
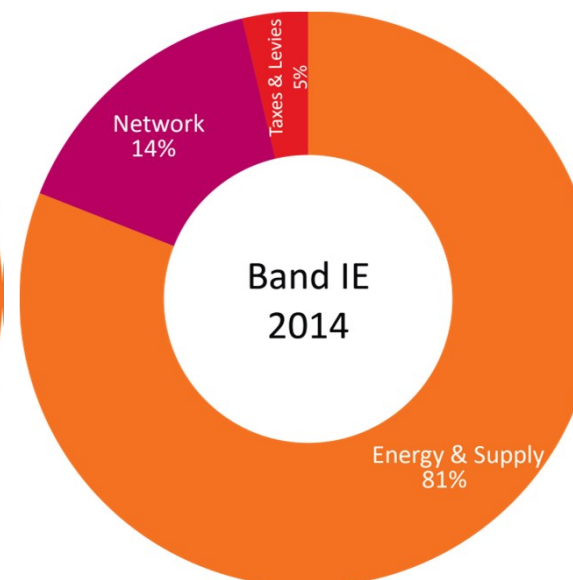
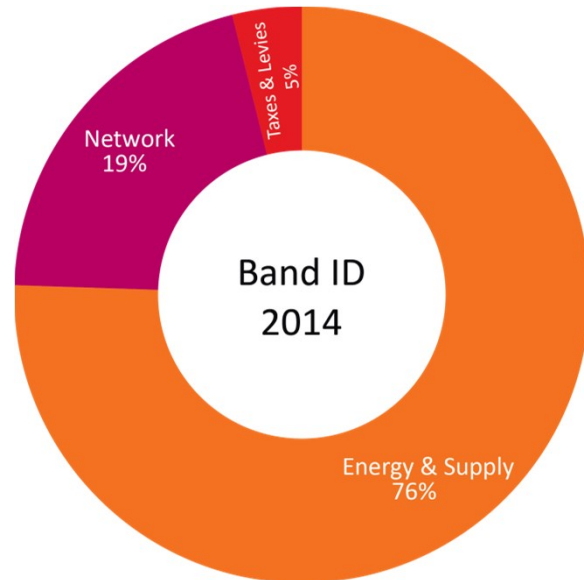
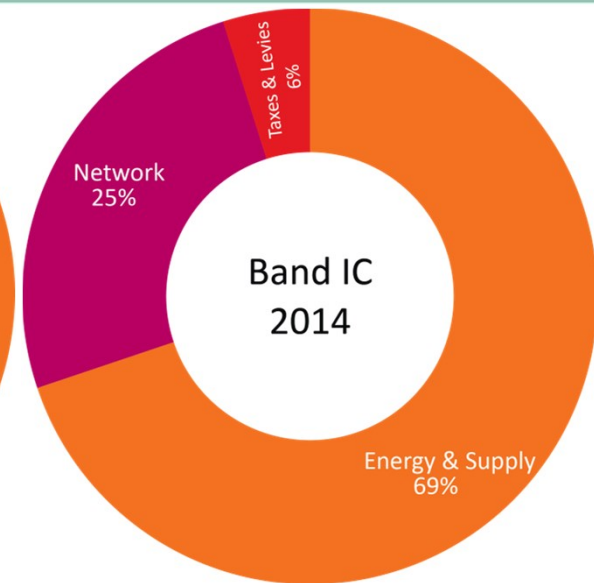
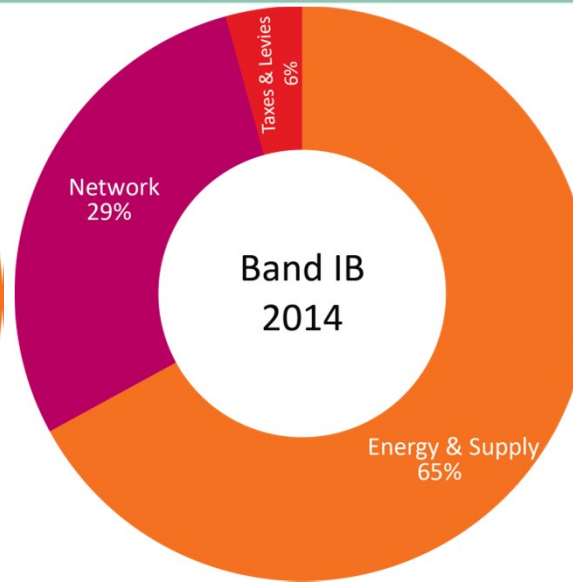
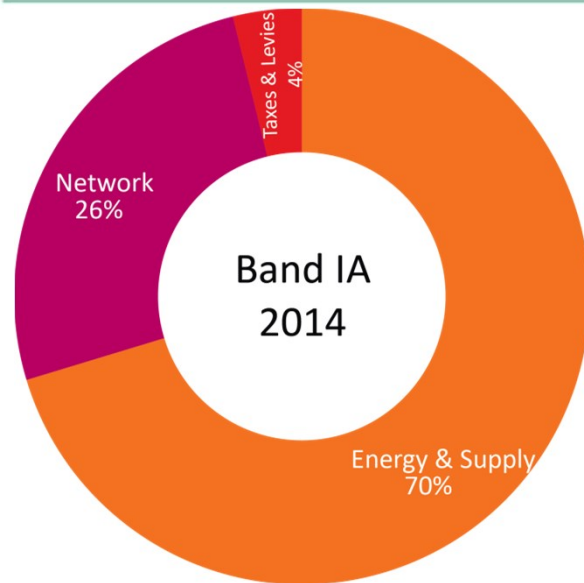
Business Electricity Prices (band IF ex-VAT)



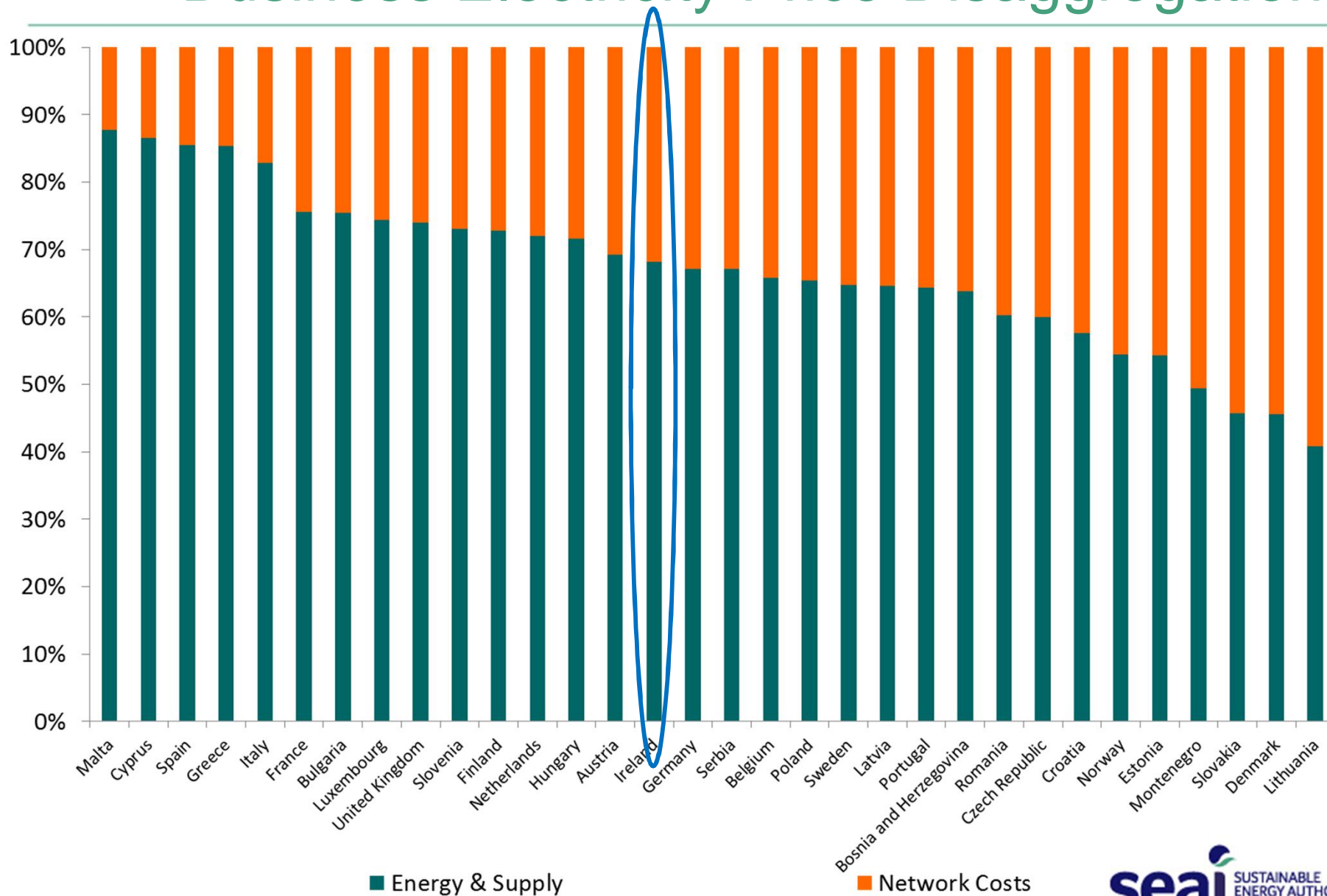
Business Electricity Prices (ex-VAT) Ranking in EU

| Business Electricity Prices (ex-VAT) | S1 '12 | S2 '12 | S1 '13 | S2 '13 | S1 '14 | S2 '14 |
|--------------------------------------|--------|--------|--------|--------|--------|--------|
| Band IA | 9 | 7 | 7 | 8 | 8 | 8 |
| Band IB | 5 | 4 | 5 | 6 | 6 | 6 |
| Band IC | 4 | 4 | 5 | 5 | 5 | 6 |
| Band ID | 8 | 4 | 7 | 5 | 7 | 8 |
| Band IE | 12 | 6 | 7 | 8 | 8 | 9 |
| Band IF | 9 | 7 | 10 | 9 | 7 | 9 |
| | .. | .. | .. | .. | .. | .. |
| No. of Countries | 30 | 30 | 30 | 30 | 30 | 30 |

Price Disaggregation



Business Electricity Price Disaggregation



Business Gas Consumption Bands

| | Annual Electricity Consumption (MWh) | | | |
|------------------|--------------------------------------|--------------|-----------------|-------------------------------|
| Consumption band | Lowest | Highest | Share of Market | Annual Spend - up to (ex-vat) |
| Band I1 | - | < 280 | 9.6% | €15k |
| Band I2 | 280 | < 2,800 | 14.9% | €125k |
| Band I3 | 2,800 | < 28,000 | 21.2% | €1,200k |
| Band I4 | 28,000 | < 280,000 | 29.4% | €9,500k |
| Band I5 | 280,000 | <= 1,100,000 | 25.0% | €34,000k approx. |

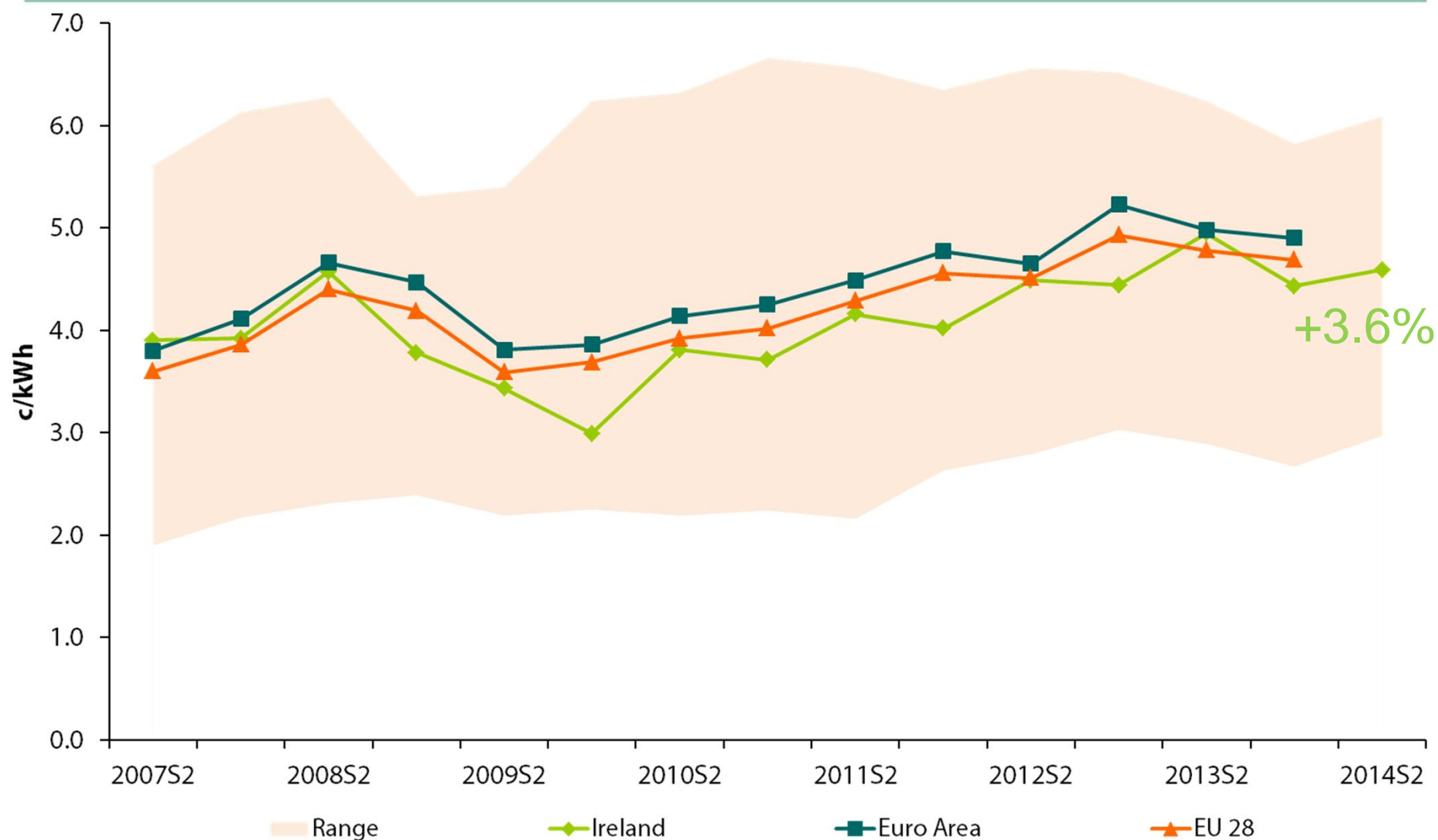
Gas Price (ex-VAT) to Business 1st Semester 2014

| Band | Share | Price c/kWh | relative to | | Ranking | | Semester price change | | |
|------|-------|----------------|-------------|------|---------|----|-----------------------|-------|-------|
| | | | EU | EA | EU | EA | Ireland | EU | EA |
| I1 | 11.3% | 5.3 | 101% | 97% | 8 | 6 | -6.7% | -5.2% | -5.7% |
| I2 | 18.9% | 4.4 | 94% | 90% | 13 | 11 | -10.5% | -1.9% | -1.6% |
| I3 | 21.1% | 4.1 | 105% | 102% | 11 | 8 | -12.9% | -1.8% | -2.2% |
| I4 | 30.7% | 3.4 | 102% | 100% | 12 | 10 | -6.7% | -3.4% | -3.7% |
| I5 | 18.0% | - | - | - | - | - | - | -2.9% | -3.2 |

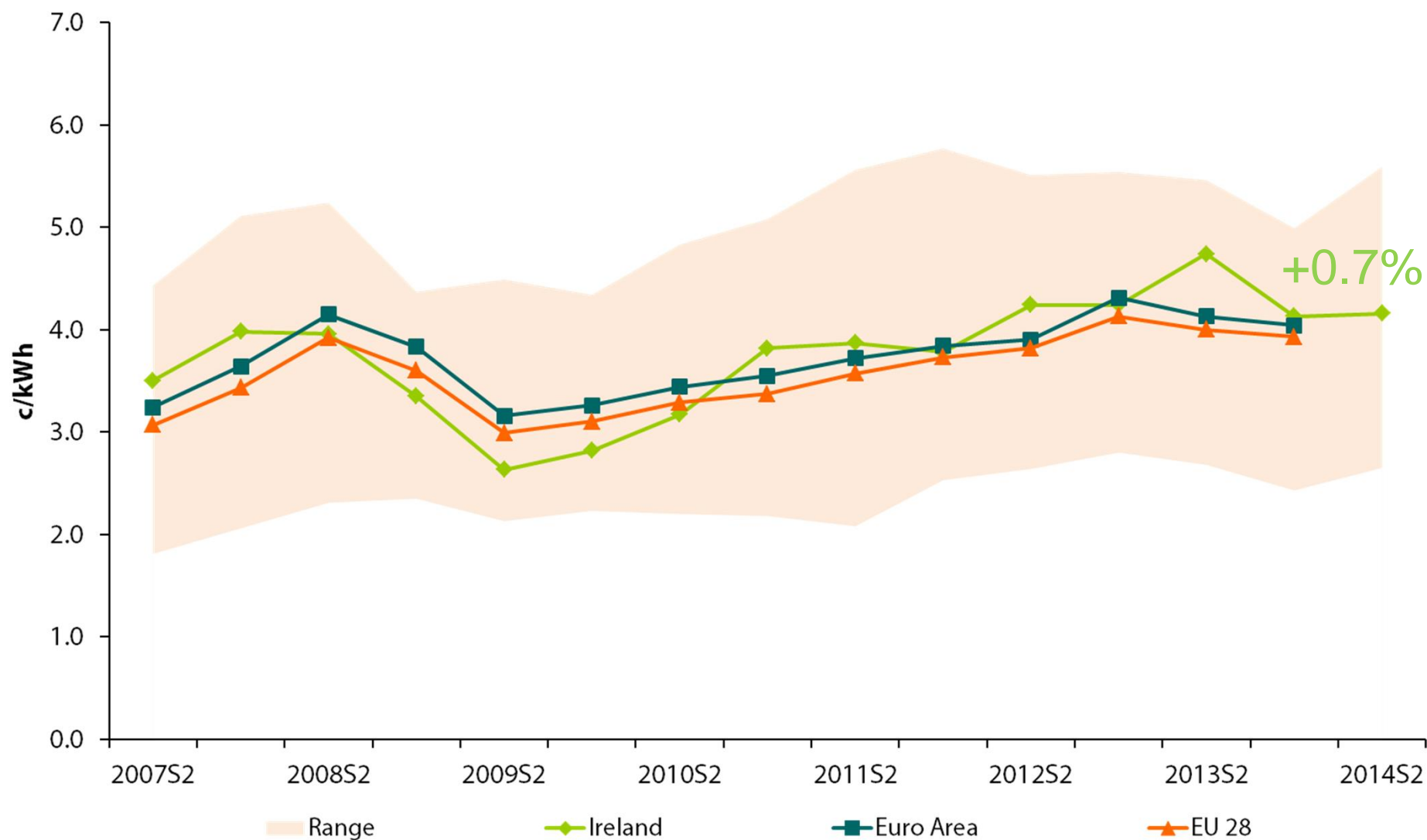
Gas Price (ex-VAT) to Business 2nd Semester 2014

| Band | Market share | Price c/kWh | Price change | |
|------|--------------|----------------|--------------|-----------|
| | | | Semester | 12 Months |
| I1 | 9.6% | 5.75 | 8.7% | 1.4% |
| I2 | 14.9% | 4.59 | 3.6% | -7.3% |
| I3 | 21.2% | 4.16 | 0.7% | -12.2% |
| I4 | 29.4% | 3.05 | -9.0% | -15.0% |
| I5 | 25.0% | .. | .. | .. |

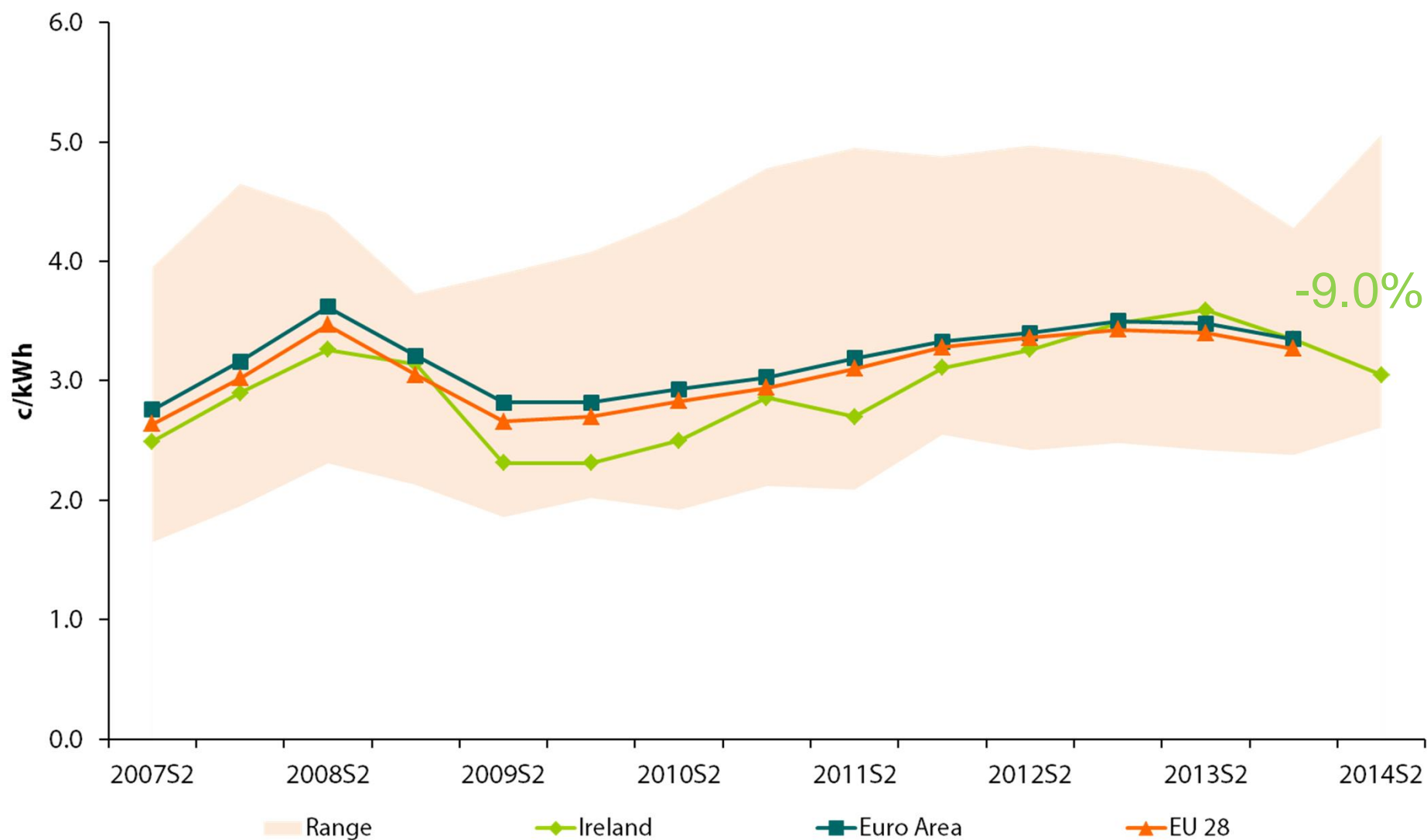
Business Gas Prices (band I2 ex-VAT)



Business Gas Prices (band I3 ex-VAT)



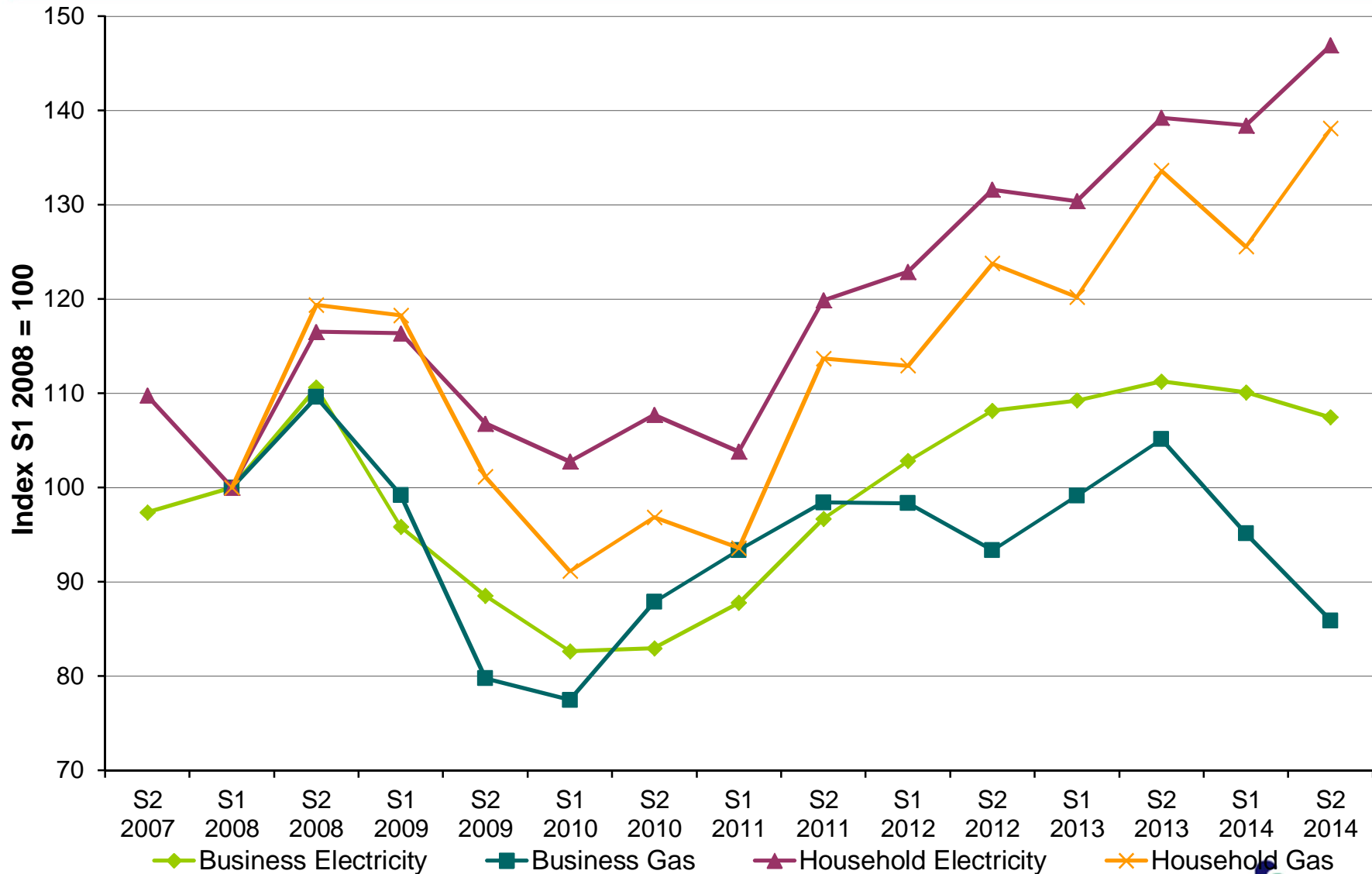
Business Gas Prices (band I4 ex-VAT)



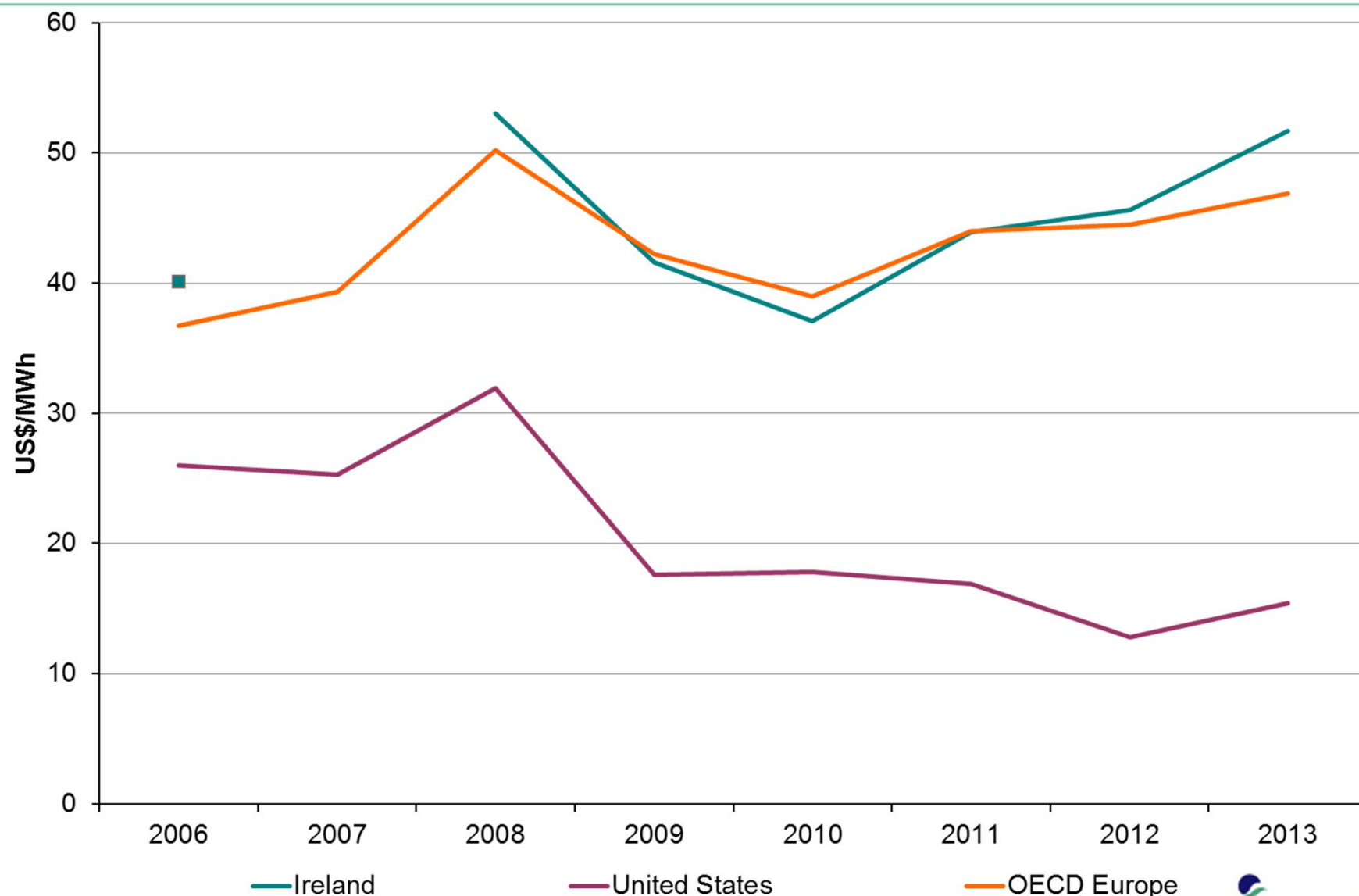
Business Gas Prices (ex-VAT) Ranking in EU

| Business Gas Prices (ex-VAT) | S1 '12 | S2 '12 | S1 '13 | S2 '13 | S1 '14 | S2 '14 |
|------------------------------|--------|--------|--------|--------|--------|--------|
| Band I1 | 19 | 14 | 13 | 9 | 8 | 9 |
| Band I2 | 17 | 16 | 17 | 12 | 13 | 12 |
| Band I3 | 14 | 9 | 10 | 5 | 11 | 5 |
| Band I4 | 19 | 18 | 15 | 11 | 12 | 19 |
| Band I5 | 20 | .. | .. | .. | .. | .. |
| | .. | .. | .. | .. | .. | .. |
| No. of Countries | 26 | 26 | 26 | 26 | 26 | 26 |

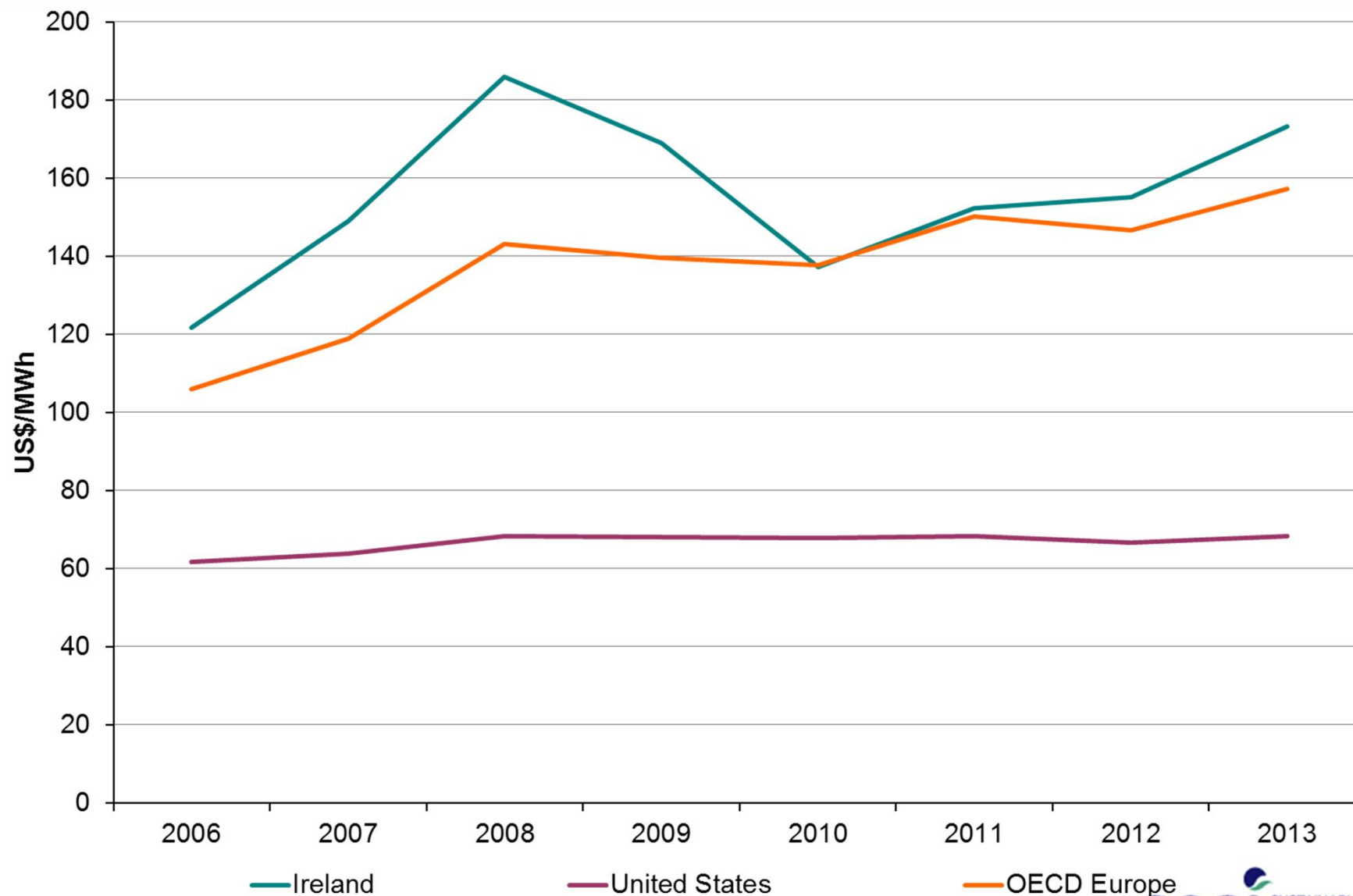
Weighted Average Prices in Ireland



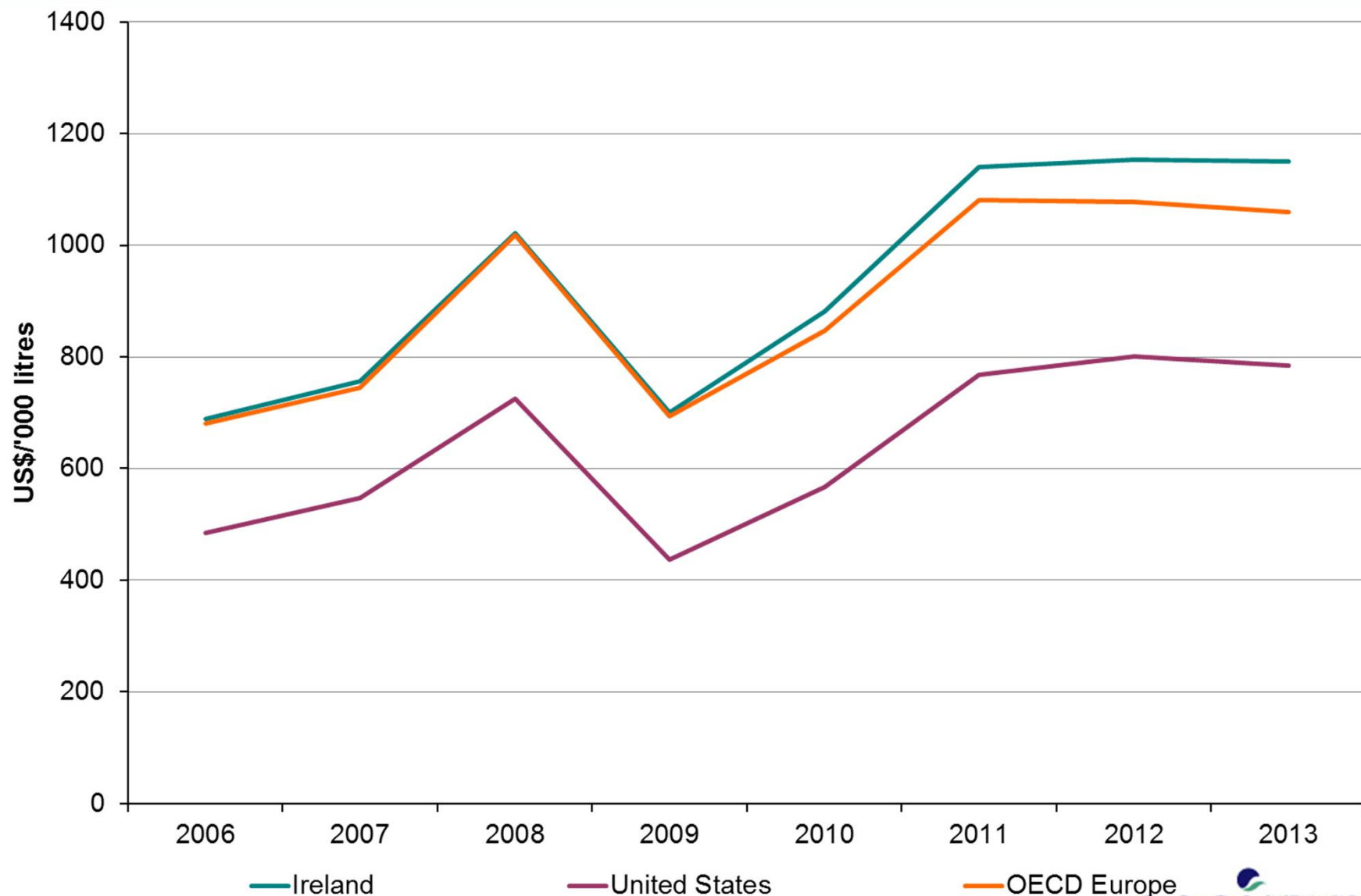
IEA Data – Natural Gas Price to Industry



IEA Data - Electricity Price to Industry



IEA Data – Light Fuel Oil Price to Industry



http://www.seai.ie/Publications/Statistics_Publications/Electricity_and_Gas_Prices/

Thank you.



Ireland's EU Structural Funds
Programmes 2007 - 2013

Co-funded by the Irish Government
and the European Union

*The Sustainable Energy Authority of Ireland is partly
financed by Ireland's EU Structural Funds Programme co-
funded by the Irish Government and the European Union.*